

Apple of My Eye Framed Mosaic

Design and Fabrication by Lisa Vogt, Text by Sara Peterson



These bright apples beckoning from their diamond-checked background are at once classic and homespun in their appeal. They're sure to add a unique charm to any kitchen. The mosaic design is sized to fit an eight-inch, off-the-shelf, wooden project frame available from your retailer. It can be hung on a wall, displayed in a stand, used as a trivet, or made into a clock. The project could also make a delightful mosaic stone by using a disposable or inexpensive cake pan as a mold and following standard stepping-stone instructions.

"Apple of My Eye" is from the new Spectrum One-Day Project Pack series, a unique idea in glass pattern collections. Each Project Pack is a self-contained tutorial focusing on a specific technique, such as mosaic or lamp building. They're so complete it's like having an instructor right at your workbench! The packs contain detailed, step-by-step instructions, a full-size, time-saving Peel & Stick pattern (which means no pattern cutting), a durable working pattern and separate archival pattern, and even helpful tips and tricks from industry pro, Lisa Vogt. Each Project Pack also includes two bonus patterns that build on the techniques learned in the main design. One Pack—three projects—each a one-day cinch.

Spectrum One-Day Project Packs are worth checking out. The projects are clever and charming, the options are many, and complete instructions are included. There are three Project Packs to choose from: "Monarch Mirror," "Romantic Lamp," and "Apple of My Eye Framed Mosaic." All are available through glass craft retailers or from the Spectrum store at www.spectrumglass.com.

Now let's harvest up some fun!

Spectrum Glass Company

#369-1S, Yellow for Apples, 1 Sq. Ft.

#317-2S, Medium Amber for Apples, 1/4 Sq. Ft.

#327-6S, Emerald for Leaves, 1 Sq. Ft.

#359-1S, Cherry Red for Background Diamonds, 1 Sq. Ft.

#308S, Clear/White Wispy for Background Diamonds, 1 Sq. Ft.

Other Materials Required

12" Ruler or Straight Edge

Masking Tape Marking Pen

E6000® Adhesive or Other Clear, Non-Water-Soluble Glue

Sanded Tile Grout

8" x 8" Wooden Frame

There are three glass-color schemes suggested in the “Apple of My Eye” Peel & Stick kit: Golden Delicious on Red, Granny Smith on Blue, and Macintosh on Brown. We decided on the Golden Delicious apples for this project, but you can use whatever color scheme best suits your decor.

Once you have selected your glass, position the Peel & Stick pattern pieces included in the kit onto the designated glass. Then score and break each piece. As each piece is cut, place it in the appropriate position on the working pattern and check its fit.

Grind the cut pieces, if necessary, to remove any sharp edges and to shape the pieces. Then carefully remove the Peel & Stick pattern pieces from the cut glass. Clean the pieces with water and a mild detergent and dry.

Place the clean, dry glass back onto the working pattern. Then lay a ruler or straight edge diagonally across the wood frame from corner to corner and draw a straight line with a pencil from corner to corner. Repeat with the opposite corners to make an “X.” This will serve as your guide for accurate placement of the glass pieces. It is very important that you follow your “X” when you place your glass pieces as it relates to the imaginary “X” formed by the checkered background in the pattern. Careful placement will keep the pattern from “outgrowing” the frame.

Step 1

Apply a thin layer of adhesive to the recessed portion of the wood base. Work in sections using the pencil lines as a guide. Then transfer the glass pieces from the working pattern to the frame. Attach the glass pieces by pressing them into the adhesive. Leave approximately 1/8" space between each piece for the grout.

Step 2

Working across the frame, continue adding the glass until the design is complete.

Step 3

Gather the grouting supplies. Mask the outer perimeter of the frame with tape to protect it from the grout.

Be sure to protect the work surface and the floor with a drop cloth or newspaper.

Step 4

Apply the grout as directed.

Move the tray to clean newspaper and let the grout set while you clean the work area. Carefully wipe the glass with a dry cloth or paper towel to remove the haze on the glass. Slowly remove the masking tape. Let the grout dry thoroughly before using your mosaic.

Now that you’re done, you can sit back, relax, and enjoy your beautiful mosaic.

Helpful Hints for Making Mosaics

When you glue the design to the wood frame, use the smallest amount of adhesive possible. The glue is less likely to fill in the spaces between the glass pieces that are intended for grout, and it will also dry more quickly.

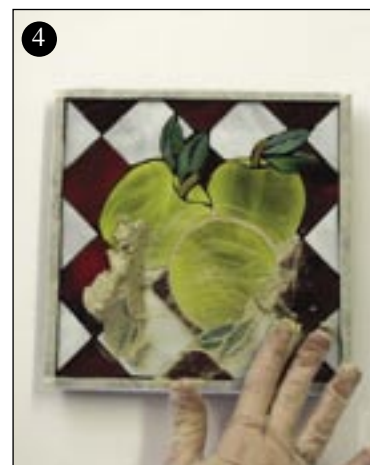
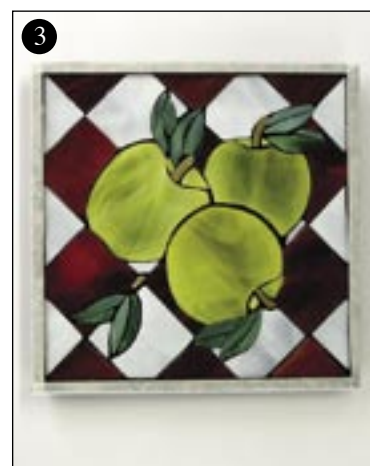
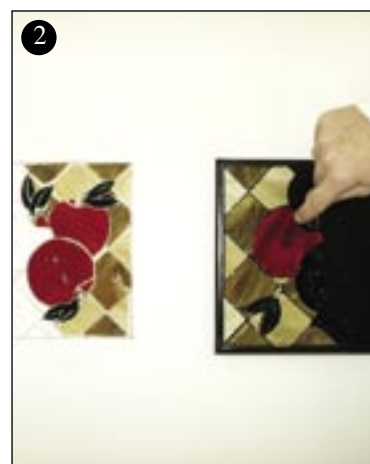
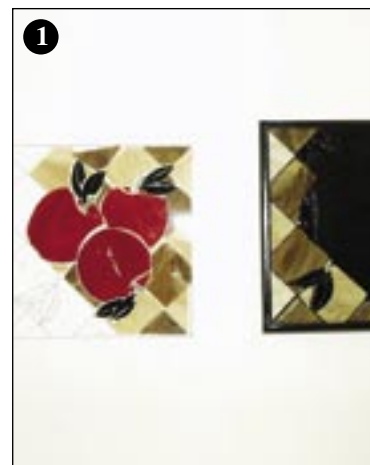
Mosaic projects benefit from accurate glass cutting and careful grinding, which is essential to creating neat and uniform grout lines.

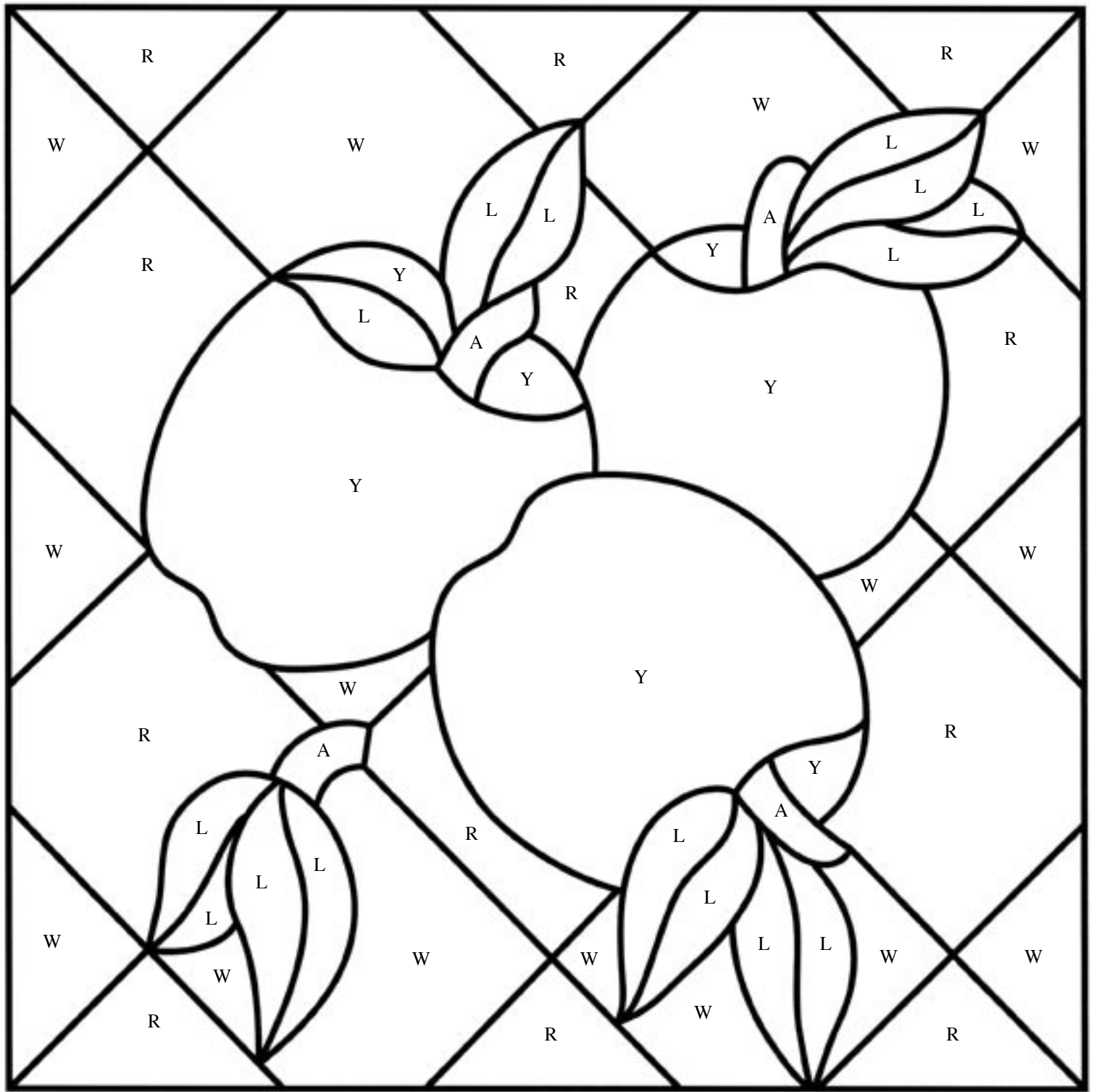
Choose reflective, not transparent, glass for mosaic designs and give preference to high-contrast colors.

Add punch to your mosaics with colored grouts. Dark grout colors add details by outlining glass pieces. Neutral or light colors de-emphasize grout lines and let the glass dominate the design.

Sanded grouts are generally preferable for glass mosaics and are important anytime your grout lines will be 1/8" or larger in width.

GPQ





Apple of My Eye Framed Mosaic

Design by Lisa Vogt

Y - Yellow for Apples, 1 Sq. Ft.
 A - Medium Amber for Apples, 1/4 Sq. Ft.
 L - Emerald for Leaves, 1 Sq. Ft.
 R - Cherry Red for Background Diamonds, 1 Sq. Ft.
 W - Clear/White Wispy for Background Diamonds, 1 Sq. Ft.

Compliments of:

GLASS PATTERNS
 • Q U A R T E R L Y •

www.GlassPatterns.com