

Publisher ~ Maureen James

Editor ~ Delynn Ellis

Graphic Artists ~ Dave Burnett,

Mark Waterbury

Accounting ~ Rhonda Sewell

Circulation Manager ~ Kathy Gentry

Copy Editor ~ Darlene Welch

Advertising ~ Maureen James

Contributing Designers and Writers

Jean Beaulieu, Jeffrey Castaline

Cathy Claycomb, Erica Biery Collins

Ruth Dobbins, Delynn Ellis

Leslie Gibbs, Petra Kaiser

Hiroiyuki Kobayashi, Jane McClarren

Chantal Paré, Alysa Phiel

Janae Polish, Carmen Flores Tanis

Wesley R. Wong, Christie Wood

Darlene Welch, Emily Zuccaro

GLASS PATTERNS QUARTERLY

Issn 1041-6684, is published quarterly

by Glass Patterns Quarterly, Inc.

POSTMASTER Send address
changes to *Glass Patterns Quarterly*,

8300 Hidden Valley Road,

P.O. Box 69, Westport, KY 40077

Telephone 800-719-0769

502-222-5631

Facsimile 502-222-4527

E-Mail info@glasspatterns.com

Graphic Transfer

info@glasspatterns.com

Website GlassPatterns.com

Subscriptions \$24 for one year,

\$43 for two years, and \$61 for three years

Sample issues U.S., \$8 Outside U.S., \$12

Sample issues Airmail, \$14

Kentucky residents, add 6% state sales tax.

Outside the U.S., add \$5 per year

for international postage.

All subscriptions must be paid in U.S. dollars

with an international money order or

with a check drawn on a U.S. bank.

Periodicals Postage Paid

at Westport, KY 40077 and additional

mailing offices. Back issues \$6

plus shipping and handling.

©2014 Glass Patterns Quarterly, Inc.

Glass Patterns Quarterly does not stand
sponsorship for opinions or facts of authors. Un-
solicited material will be handled with care, but
the magazine assumes no responsibility for it.

From the Editor

Splendor in the Glass

Botanicals, leaves, winged creatures . . . the themes of spring never get old. Many areas of the United States have battled unseasonably cold, snowy temperatures for a good part of the winter, so spring's return this year is a special relief to most.

While the delicate petals and luminescent wings of springtime are often a challenge to recreate realistically in glass, the tutorials on the following pages offer special tips to get the job done. You can see for yourself the distinct features that turn an assembled project into a work of art. Check out the 3-D stamens in Chantal Paré's rich blue and fuchsia anemones, the intensity of the hatch marks in Carmen Flores Tanis' floppy flowers, and the natural looking seeds that cover the center of Erica Biery Collins' sunflowers. It is details like these that expand a replica into a piece that has depth and character.

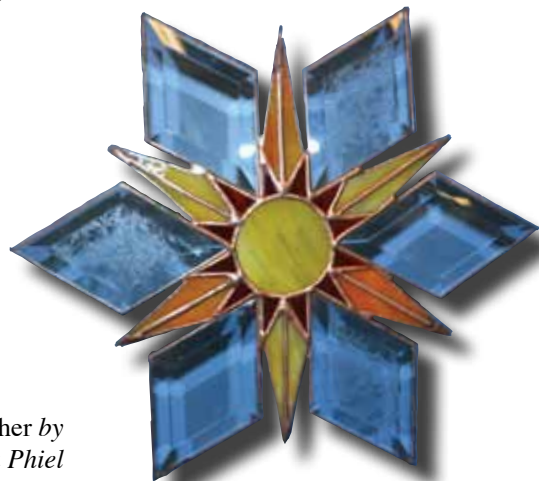
The enthusiasm you feel from making a quality glass project can't help but make you want to share your talents with others, whether it's teaching glass techniques to a young neighbor, as Leslie Gibbs does in "Glories in the Garden," or responding to the special needs community like occupational therapist Janae Polish in "The Therapeutic Value of Mosaic Teamwork." Janae uses glass as a medium for enriching the lives of clients who would not normally get the opportunity to work with glass. You don't have to be a licensed therapist, however, to bring the splendor of glass to your own church, school, mom's group, or senior center.

The KBW Foundation is taking this concept further by promoting "Art Glass in Art Class," a hands-on dissemination of knowledge about art glass to art teachers around the country. This collaborative program helps licensed teachers integrate glass into their art curriculums as they provide a hands-on experience working with glass. *Glass Patterns Quarterly*, *Glass Art*, and *The Flow* are proud sponsors of the program, which hopes to inspire budding glass artists for years to come.

Encouraging you to make great glass,

Delynn Ellis

Delynn Ellis
Managing Editor



Sunburst Suncatcher by
Alysa Phiel

Upcoming Submission Deadlines

Summer 2014 *Americana: Symbols and Motifs of American Heritage*

Editorial March 20, 2014

Ad Closing April 20, 2014

Ad Materials April 30, 2014

Fall 2014 *Autumn, Halloween, Christmas, and Holiday Ornaments*

Editorial June 20, 2013

Ad Closing July 20, 2014

Ad Materials July 30, 2014